



**African Population and
Health Research Center**

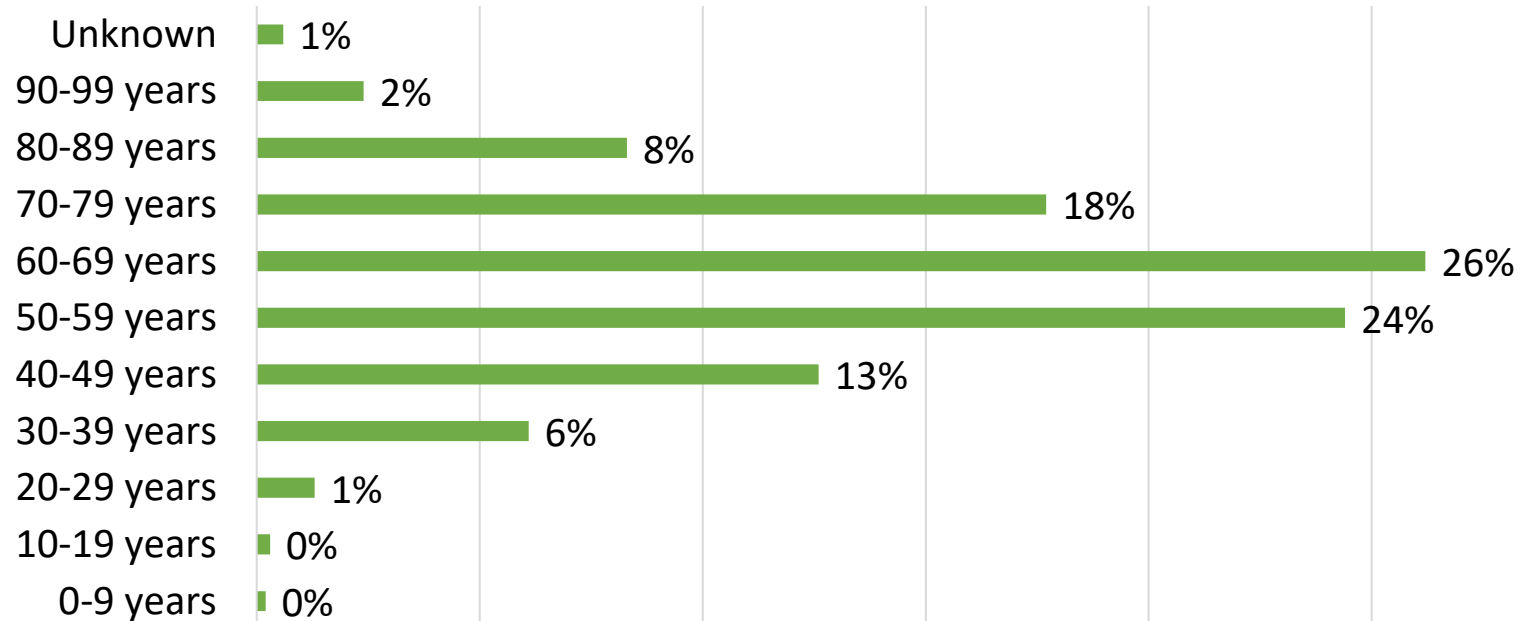
COVID-19: What are the implications for adolescent sexual and reproductive health and rights in Africa?

Caroline Kabiru

August 31, 2020

Lower risk of morbidity and mortality among adolescents

Distribution of COVID-19 deaths in South Africa as of June 22, 2020, by age



Free Newsletter


The New Humanitarian | 25 years of journalism from the heart of crises

Ad and Policy Conflict Environment and Disasters Migration About us

Health News 13 July 2020

Kenya's teen pregnancy crisis: More than COVID-19 is to blame

'When you talk about women's empowerment... it's going to be affected by what is happening right now.'



Neha Wadekar
An independent reporter based in Kenya and reporting across Africa

TNH | She Said

(Mustafa Omar, Brett Jordan/Unsplash; Abigail Geiger/TNH)

INSIDE DEVELOPMENT | FOCUS ON: GENDER DATA

Dramatic rise in Kenya early pregnancies amid school closures, IRC data suggests

By **Emma Smith** // 14 August 2020

Careers & Education Global Health Media And Communications IRC Kenya

NATION BETA

Editorials Our Columnists Guest Blogs Letters to the Editor Cutting Edge Cartoons

Address the spike in teen pregnancies

Sunday, August 23, 2020

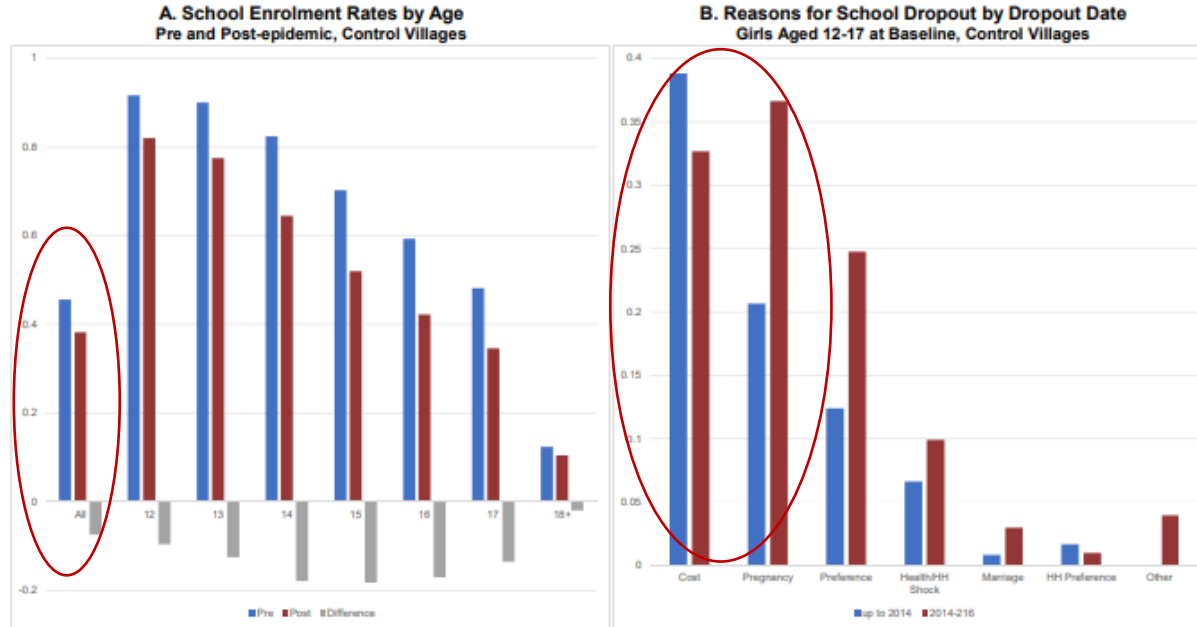


Pregnant schoolgirls. They were rescued and hosted at Community Forum for Advanced Sustainable Development in Kisumu on July 16, 2020.

Ondari Ogega | Nation Media Group

Effect of Ebola outbreak on pregnancy risk among adolescents

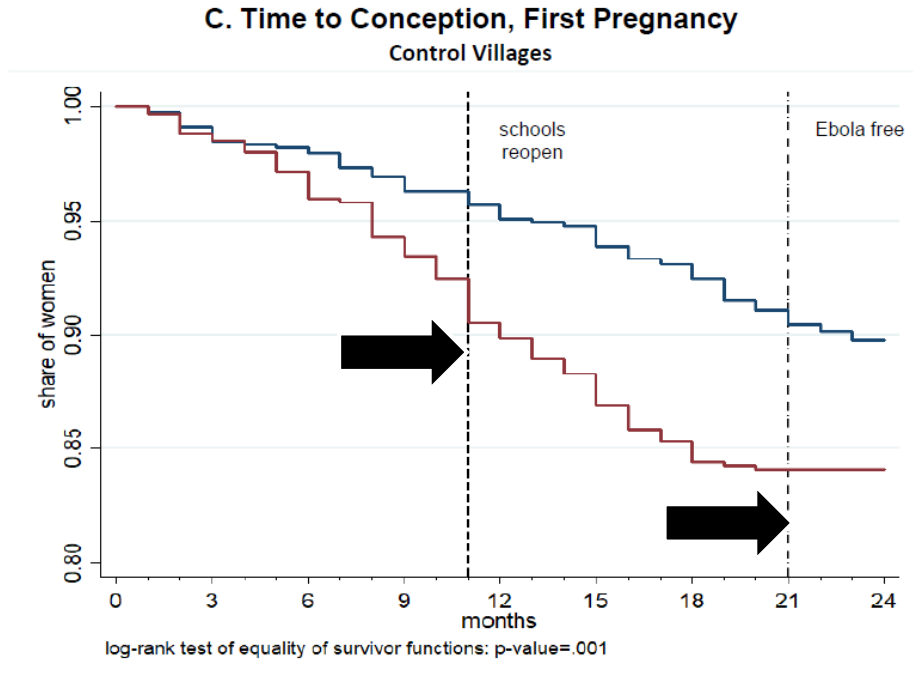
Figure 4: Schooling and Pregnancy Over the Course of the Epidemic



Source: Bandiera, O., Buehren, N., Goldstein, M., Rasul, I., & Smurray, A., (2020). Do School closures during an epidemic have persistent effects? Evidence from Sierra Leone in the time of Ebola.

http://www.homepages.ucl.ac.uk/~uctpimr/research/ELA_SL.pdf

Effect of Ebola outbreak on pregnancy risk among adolescents



Source: Bandiera, O., Buehren, N., Goldstein, M., Rasul, I., & Smurray, A., (2020). Do School closures during an epidemic have persistent effects? Evidence from Sierra Leone in the time of Ebola. http://www.homepages.ucl.ac.uk/~uctpimr/research/ELA_SL.pdf

Effect of Ebola outbreak on family planning service utilization

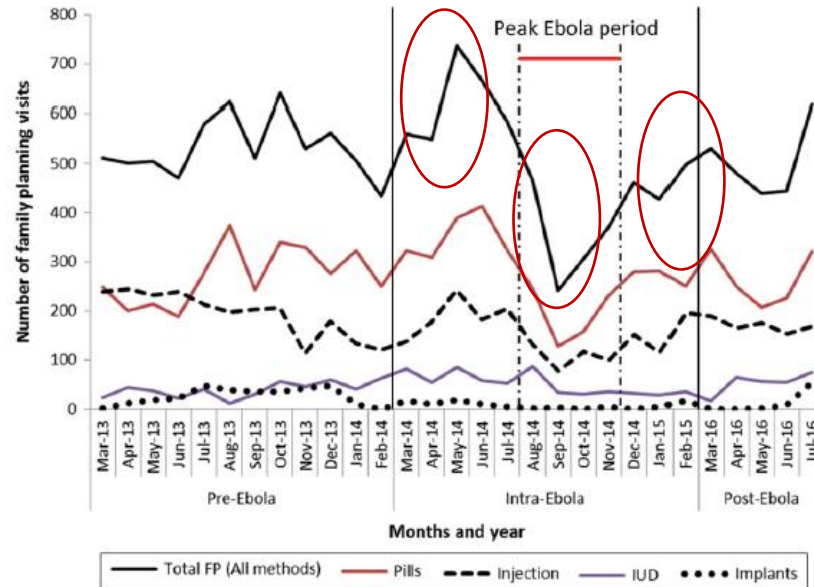


Figure 1. Trend in number of family planning visits by type of family planning method during the pre-Ebola, intra-Ebola and post-Ebola periods, in Macenta district, Guinea (March 2013 to July 2016). FP: Family planning; IUD: Intra uterine device. Data source: Ministry of Health and Sanitation.

Source: Camara, B. S., Delamou, A., Diro, E., Béavogui, A. H., El Ayadi, A. M., Sidibé, S., ... & Okumura, J. (2017). Effect of the 2014/2015 Ebola outbreak on reproductive health services in a rural district of Guinea: an ecological study. *Transactions of The Royal Society of Tropical Medicine and Hygiene*, 111(1), 22-29.

Other potential impacts of COVID-19 on adolescent sexual and reproductive health

reliefweb

SEARCH UPDATES COUNTRIES DISASTERS ORGANIZATIONS TOPICS JOBS TRAINING

RW COVID-19 page: Find latest updates on global humanitarian responses

Kenya

Fighting the shadow pandemic of violence against women and children during COVID19

Source: UNSDG • Posted: 5 May 2020 • Originally published: 5 May 2020 • Origin: View original #



© WHO/MoH

Primary country:

Kenya

Source:

UN Sustainable Development

Format:

News and Press Release

Theme:

Protection and Human Right

Disaster type:

Epidemic

Language:

English



Our Priorities Our Results Our Approach Support Us

Home Blogs

Delivering Comprehensive Sexuality Education (CSE) During COVID-19 through WhatsApp: The Case of Family Health Options Kenya (FHOK)

23 June 2020



THE CONVERSATION

Academic rigour, journalistic flair

COVID-19 Arts + Culture Business + Economy Education Environment + Energy Health + Medicine Politics Science + Technology

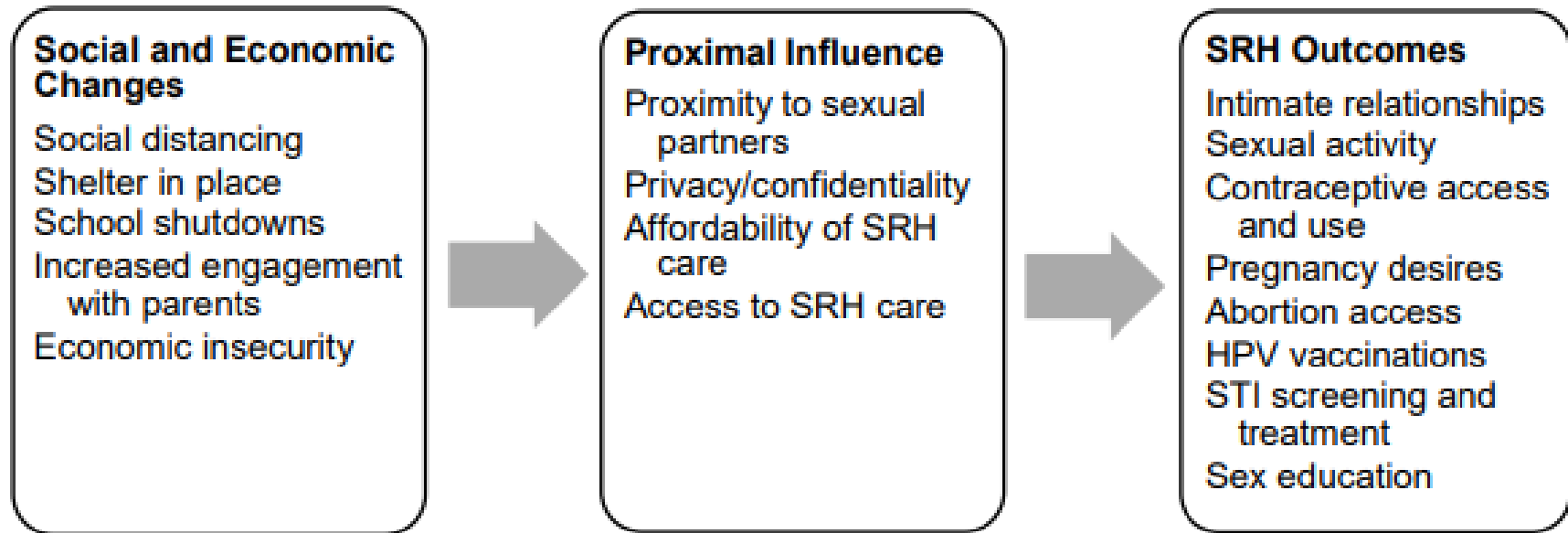
Periods in a pandemic: women and girls in low-income settlements need more support

May 28, 2020 10:58am SAST

About IPPF | E



How does COVID-19 impact on adolescent sexual and reproductive health?



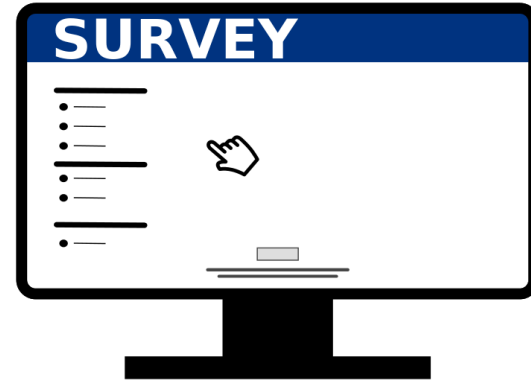
Lindberg, L. D., Bell, D. L., & Kantor, L. M. (2020). The Sexual and Reproductive Health of Adolescents and Young Adults During the COVID-19 Pandemic. Perspectives on Sexual and Reproductive Health.

<https://onlinelibrary.wiley.com/doi/full/10.1363/psrh.12151>

Critical gaps

Critical gaps (1)

Inadequate data systems to fully capture impacts of COVID-19



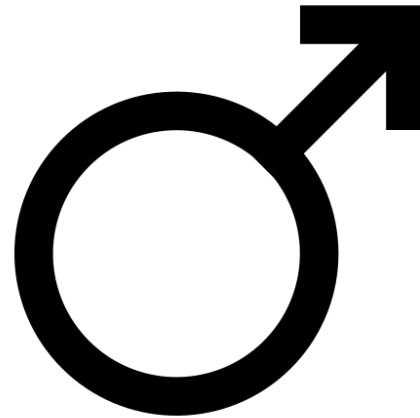
Critical gaps (2)

Research ethics



Critical gaps (3)

Exclusion of
adolescent boys



Critical gaps (4)

Knowledge translation and implementation research



Acknowledgements

Anthony Ajayi, Post-doctoral Fellow, APHRC

Kenneth Juma, Research Officer, APHRC

Meggie Mwoka, Policy and Research Officer, APHRC



**African Population and
Health Research Center**

Thank you



@CwKabiru



@aphrc

@aphrc

www.aphrc.org