

The Climate Crisis

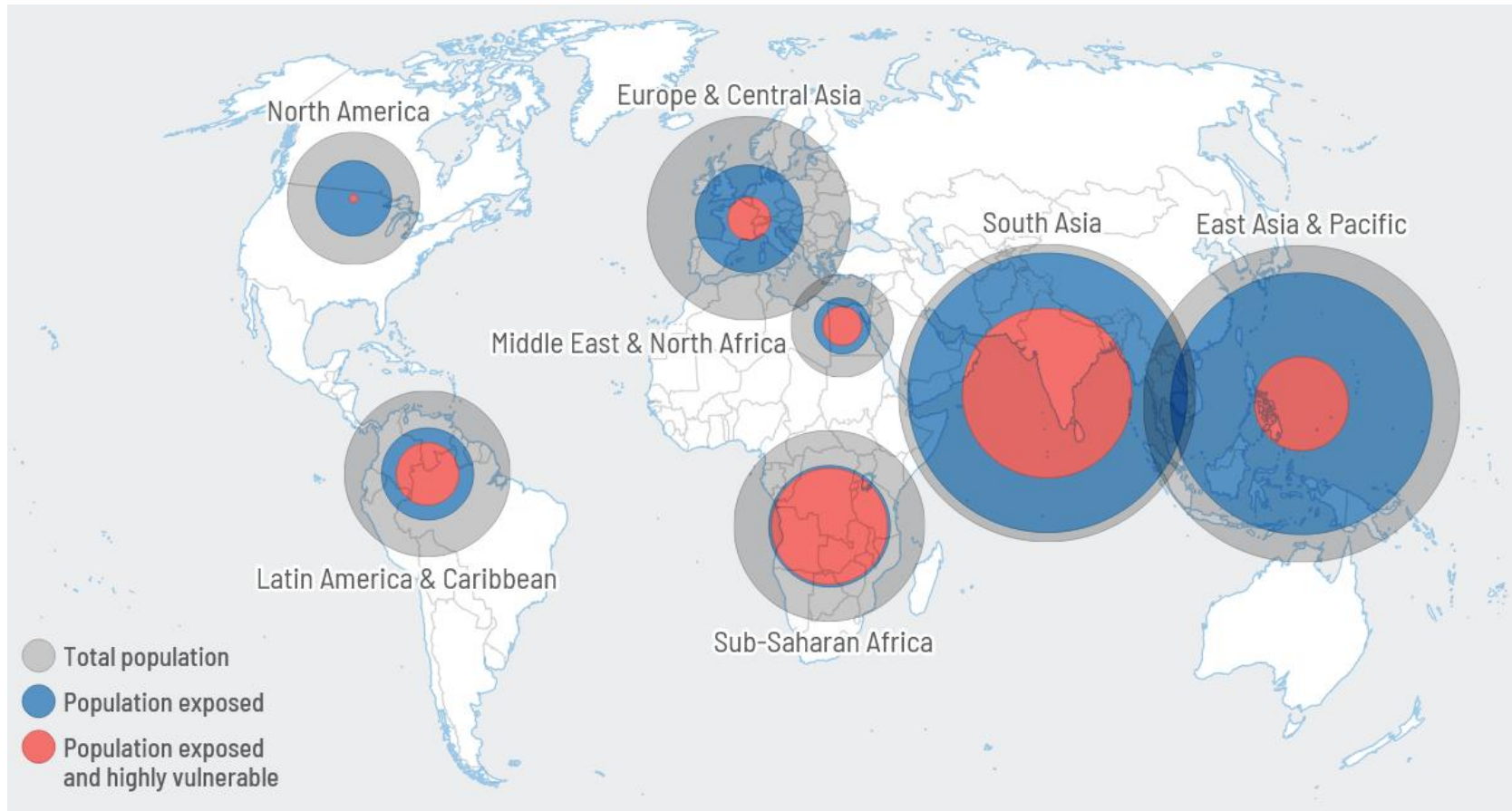
Social Contexts and the Unequal Burden of Climate Change

Roman Hoffmann

Migration and Sustainable Development Research Group
International Institute for Applied Systems Analysis (IIASA)
Wittgenstein Centre for Demography and Global Human Capital

Climate change affects populations worldwide

Share of population at high risks to different climatic hazards in 2021



Approximately one-fifth of the global population (1.8 billion people) is currently at high risk from climate-related hazards.



Climate change as a global crisis



Increasingly worsening conditions

Climate hazards have been accelerating, and their frequency, intensity, and unpredictability are increasing.



Climate change as a social crisis

Social conditions and structural inequalities exacerbate the impacts of climate change on populations.

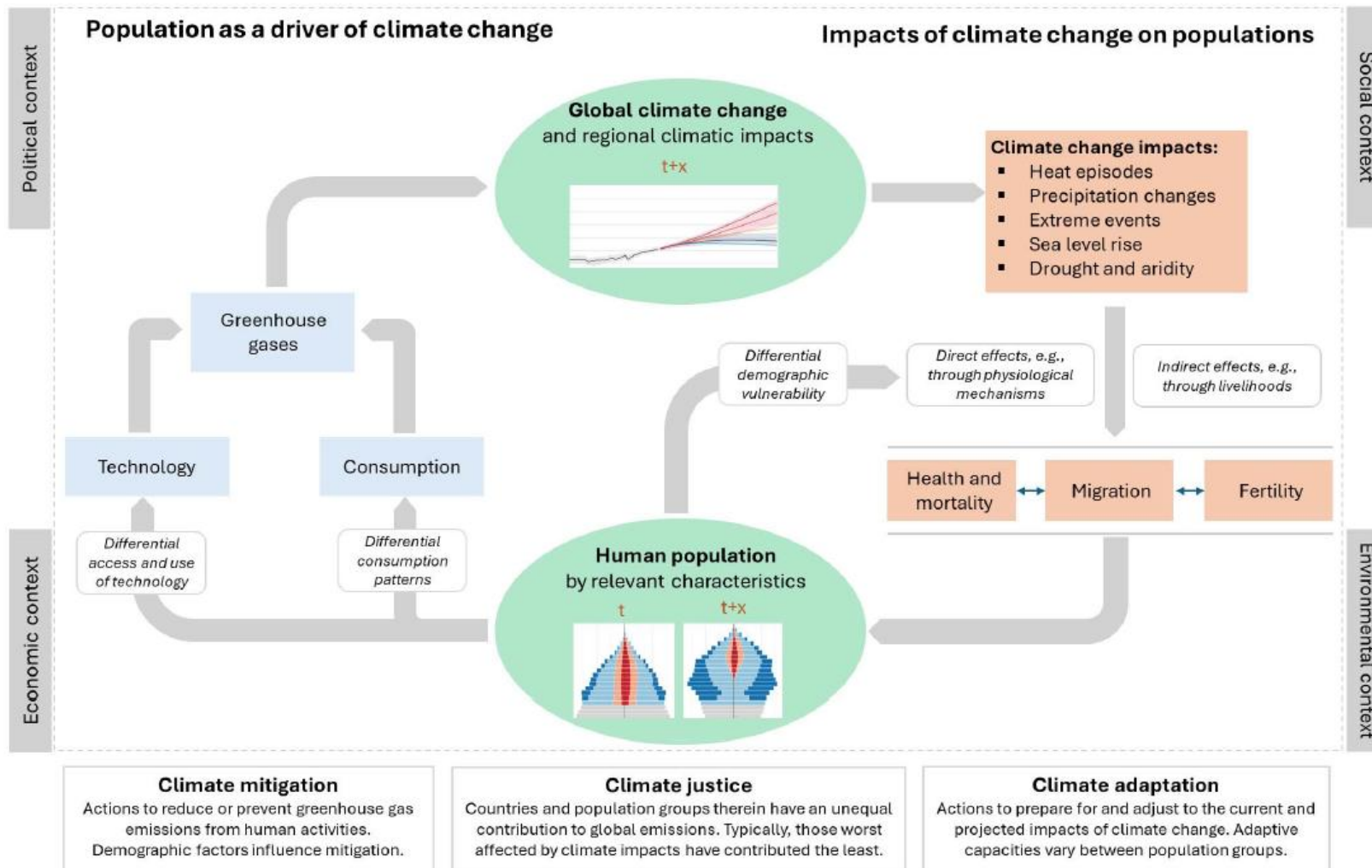


Major policy gaps remain

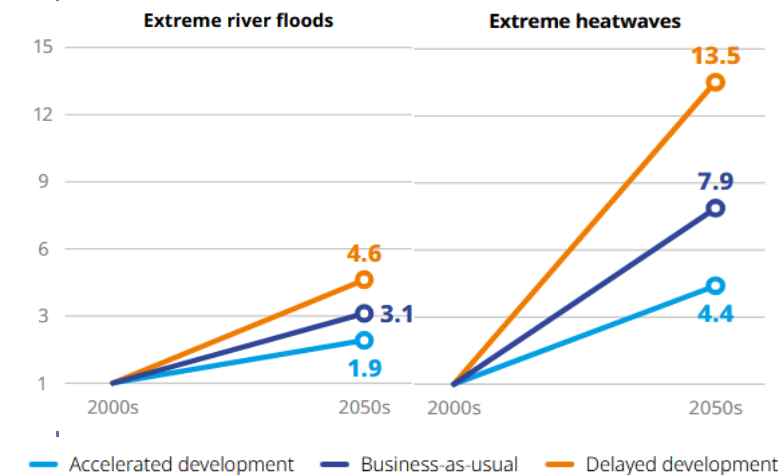
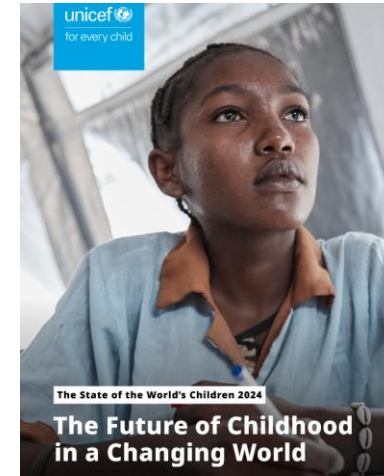
Lags in implementation of mitigation and adaptation efforts as well as compensation of loss and damages.



Populations at the centre of the climate crisis

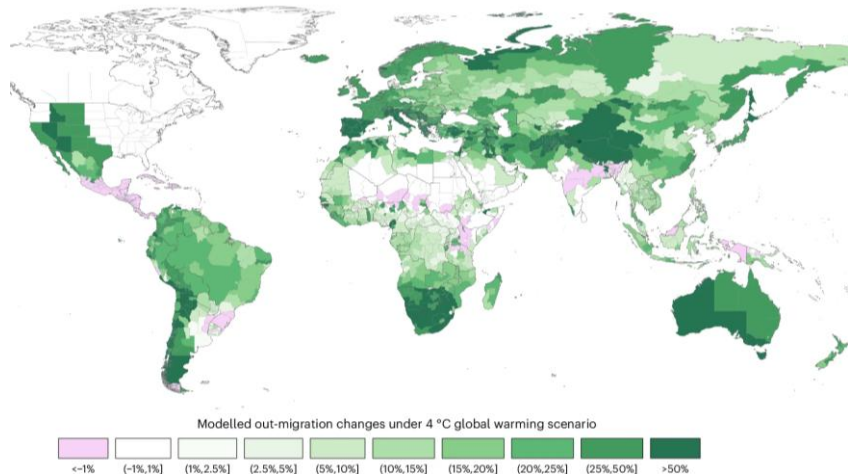


Increasing climatic risks for children in the future

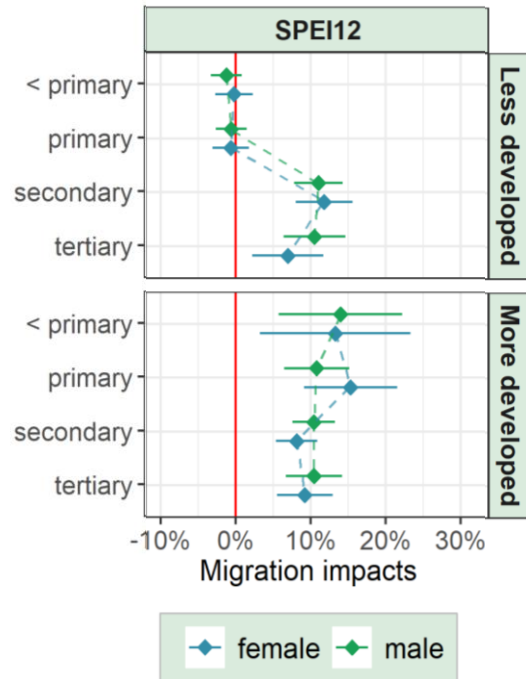


Climatic hazards influence migration but not alone

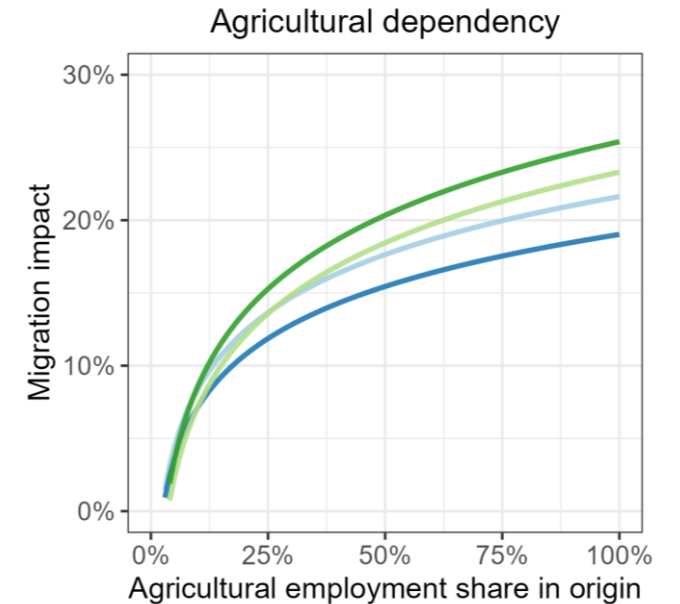
Drought and aridification can increase internal migration but major heterogeneity in effects



Differential mobility patterns within population. Many remain immobile for various reasons



Socioeconomic contexts play a key role in moderating climatic impacts on mobility



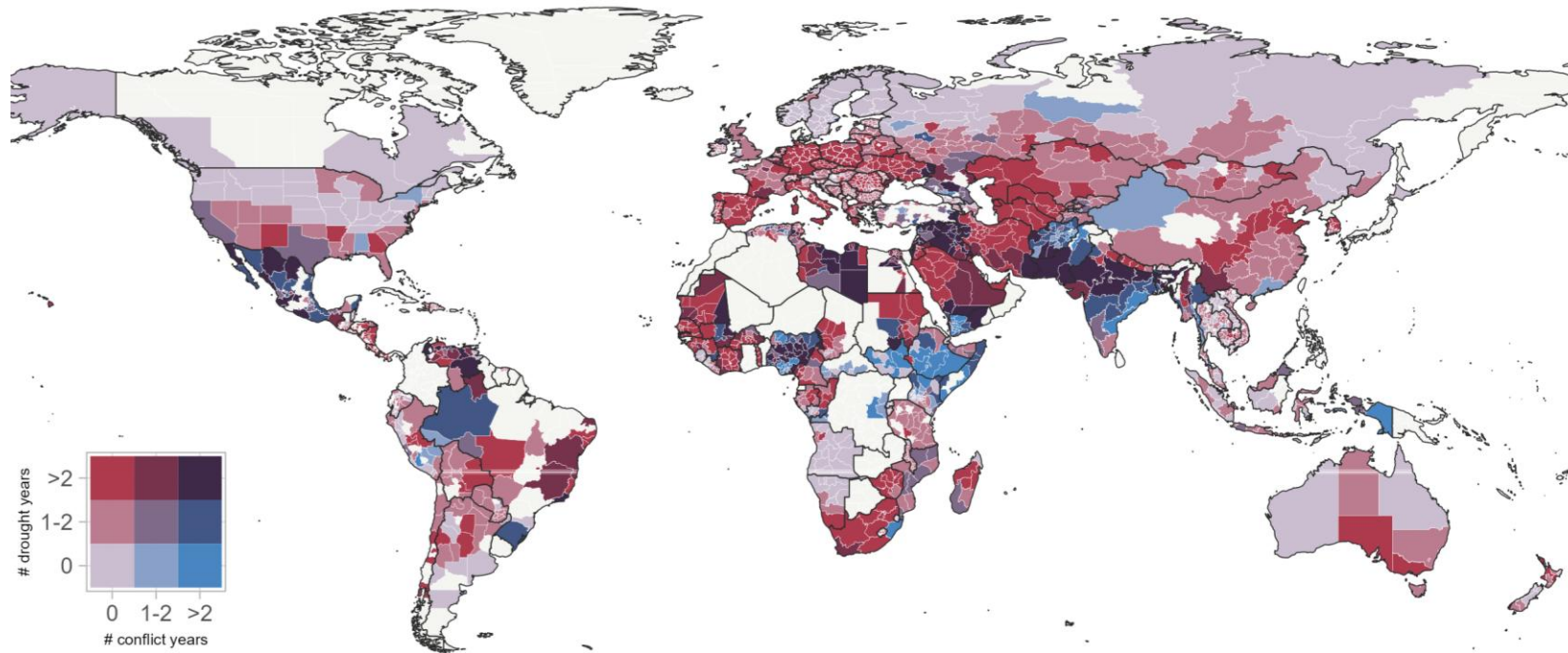
Climatic hazards can be exacerbated by other risks



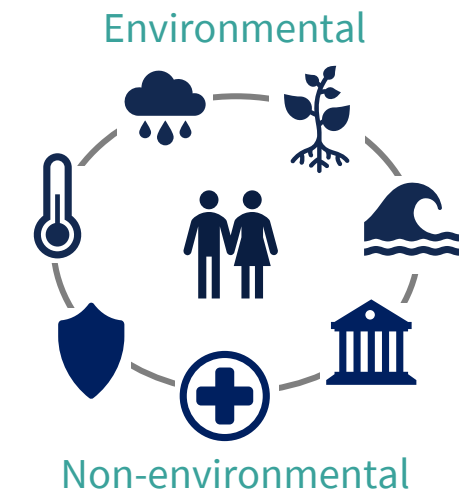
Need to take interrelationships between multiple risks and contextual drivers into account

Overlap between conflict and drought risks worldwide

Number of years with drought and conflict in subnational regions, 2010-2019



Multi-hazard risks



Thank you for your attention!

The Climate Crisis

Social Contexts and the Unequal Burden of Climate Change

Roman Hoffmann

 <https://iiasa.ac.at/staff/roman-hoffmann>

 hoffmannr@iiasa.ac.at

 <https://www.linkedin.com/in/roman-hoffmann>

Learn more about our ongoing projects:



2C-RISK Project

Climate (Im)Mobility in the Context
of Compound and Cascading Risks



Funded by
the European Union



European Research Council
Established by the European Commission



CCMIG-EU Project

Quantifying climate migration
towards and within Europe



Promoting Innovation.



SPES Project

Sustainability Performances,
Evidence & Scenarios



Funded by
the European Union