

IUSSP Seminar on Spatial Analysis in Historical Demography: Micro and Macro approaches

Quebec City, Canada, 17-18 September 2015

Organized by the IUSSP Scientific Panel on historical Demography
in collaboration with the Université du Québec à Chicoutimi

Financial support from the Université du Québec à Chicoutimi, the Centre Interuniversitaire d'études québécoises (CIEQ) and the Université de Genève

Program Committee: Martin Dribe (*Lund University, Sweden*), Don Lafreniere (*Michigan Technological University, United States*), Diego Ramiro Fariñas (*Spanish Council for Scientific Research, Spain*), Hélène Vézina (*Université du Québec à Chicoutimi, Canada*)

SEMINAR REPORT

In recent years many new data sources have become available to historical demographers, which often include detailed geographical information allowing for sophisticated spatial analysis. Full-count data from national censuses with geographical identifiers at low levels of aggregation, even at the scale of the individual, as well as detailed historical maps of cities and countrysides are two examples of such developments. The linkage of contextual information to micro-level socioeconomic and demographic data further enrich these data sources and opens up a whole new range of possibilities for greatly improving our understanding of demographic patterns in the past. Spatial modeling of fertility and mortality change in the past or of the diffusion of new behavior in family formation and partner selection could make major contributions for our understanding of the first demographic transition. The analytical possibilities afforded by utilizing a historical GIS offer a completely new perspective and knowledge about the interaction between climatic, environmental, socioeconomic and demographic processes relating to health, mortality, migration, and families in the past.

The aim of this seminar was to stimulate original research in historical demography making use of these new data resources and infrastructures to address the major themes of the discipline and to bring together researchers from various backgrounds interested in spatial analysis in historical demography. The key issues addressed concerned the integration of space in micro- and macro-level demographic analyses, the influence of context at various levels (multidimensional space) on individual demographic outcomes, the connections between people and places and the processes by which these connections operate.

The seminar was attended by historical demographers, economic and social historians, historical geographers and sociologists from North American and European universities. The program consisted of sixteen presentations grouped in five thematic sessions: The Micro Space of Life in the City (4 papers); Disentangling Spatial and Social Effects (2 papers); Household and

Residential Patterns (2 papers); Modelling Mortality and Morbidity (4 papers); Population, Migration and Movement at the Macro-Scale (4 papers). Studies were conducted at a variety of geographic scales going from entire countries, to regions or cities using data from Sweden, Italy, Belgium, France, England, Spain, Canada and the USA. Researchers used individual, family and/or household information as well as other sources combined with historical GIS and applied various methods of demographic and spatial analyses to their datasets.

Comments and questions addressed to the presenters referred to methodological, conceptual and substantive issues. In terms of methodology, challenges related to the combination and analysis of multiple data sources were raised and led to a recommendation of pushing on methodological sophistication. Following discussions, another recommendation was to overcome assumptions such as considering that spatial closeness implies a social network.

Lastly, a more general recommendation was to find opportunities and foster activities that will encourage communication between contemporary and historical demographers. Working with historical data often means having to find ways of handling incomplete data, to adapt analytical approaches and to question the representativeness of results. Contemporary data can bring up the same type of issues and contemporary demographers could benefit from the expertise and tools developed by historical demographers who don't always seem aware of the relevance of their work.

The output of the seminar will be a special issue in a peer-reviewed demographic journal.

17-18 SEPTEMBER 2015

SPATIAL ANALYSIS

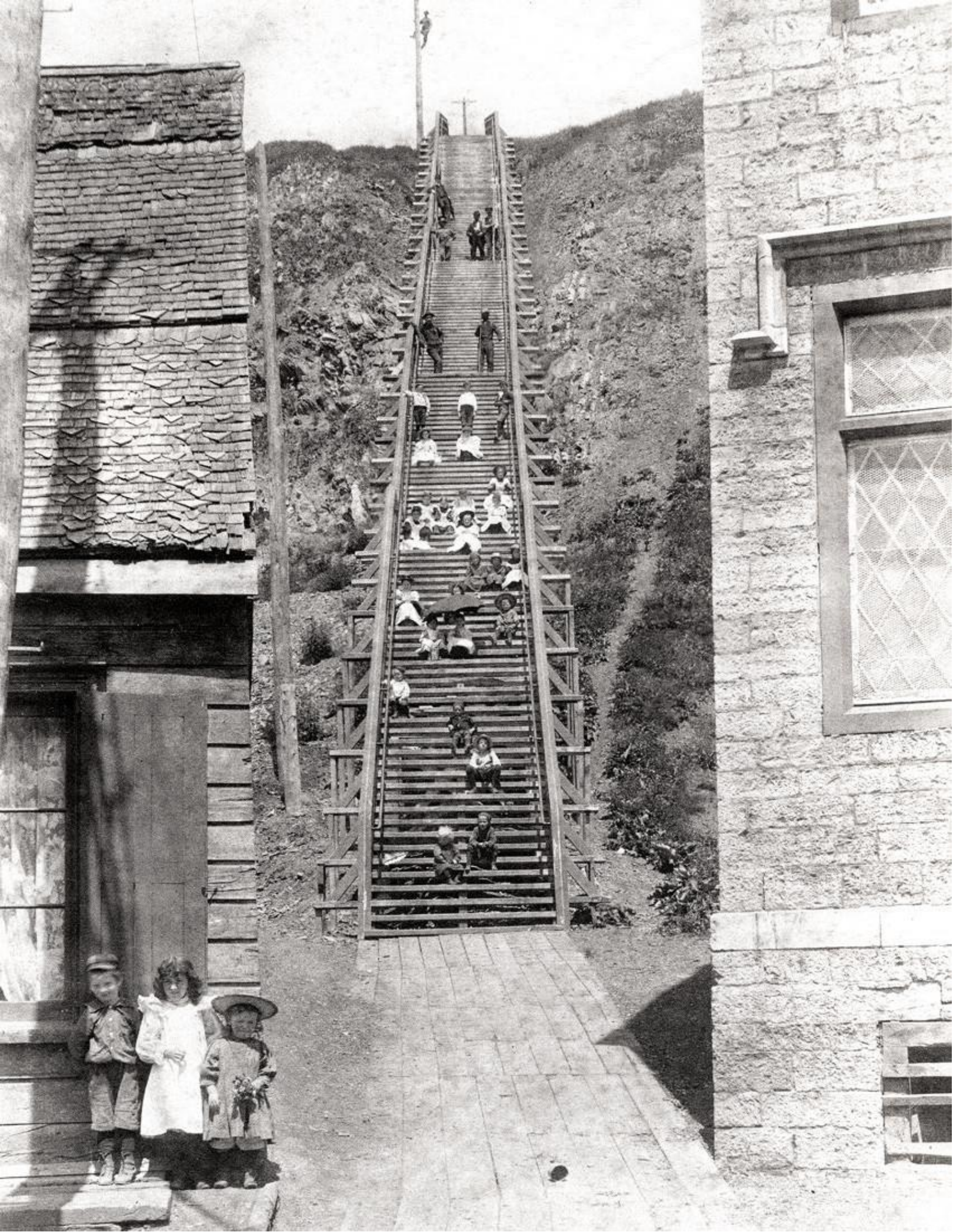
in Historical Demography

Micro and macro approaches

Université du Québec, 475 rue du Parvis,
Québec, Salle du Conseil (room 2410)



Source iconographique: *Escalier du Cap-Blanc, Québec, vers 1895*. Philippe Gingras. BANQ-Qc, P585,D14,P12.



Organized by the **IUSSP Scientific Panel on Historical Demography** in collaboration with the Université du Québec à Chicoutimi with support from the Centre interuniversitaire d'études québécoises (CIEQ) and the Université de Genève.

17-18 SEPTEMBER 2015

SPATIAL ANALYSIS

in Historical Demography

Micro and macro approaches

Université du Québec, 475 rue du Parvis, Québec,
Salle du Conseil (room 2410)

SCIENTIFIC COMMITTEE

Martin Dribe (University of Lund)

Don Lafreniere (Michigan Technological University)

Diego Ramiro Fariñas (Spanish Council for Scientific
Research)

Hélène Vézina (Université du Québec à Chicoutimi)

LOCAL ORGANIZER

Hélène Vézina (Université du Québec à Chicoutimi)

hvezina@uqac.ca



PROGRAMME

THURSDAY 17 SEPTEMBER

8h45-09h00. Opening by the scientific committee
Welcome address by Lyne Sauvageau, vice-présidente à l'enseignement
et à la recherche, Université du Québec

9h00-10h30. **The Micro Space of Life in the City**

Chair: **Diego Ramiro Fariñas**

Exploring urban time-spaces, a perspective from nineteenth-century Montreal.

Sherry Olson (McGill University, Montreal, Canada)

*Footwear Workers in Québec City: A Spatial Analysis of Familial
and Social Reproduction in 1911.*

Marie-Eve Harton (Université Laval, Québec,
Canada) **Richard Marcoux** (Université Laval,
Québec, Canada) **Laurent Richard** (Université
Laval, Québec, Canada)

10h30-11h00. Break

11h00-12h30. **The Micro Space of Life in the City (continued)**

Chair: **Diego Ramiro Fariñas**

Socio-Spatial Mobility and Urban Environments in the 19th Century City

Don Lafreniere (Michigan Technological University, United States)
Jason Gilliland (University of Western Ontario, Canada)

Marrying upward or downward: intra-urban marriage fields in Quebec City, 1871-1901

Marc St-Hilaire (Université Laval, Québec, Canada)

12h30-13h30. Lunch

13h30-15h00. **Disentangling Spatial and Social Effects**

Chair: **Don Lafreniere**

*Spatial vs. social distance in the diffusion of fertility decline:
Evidence from Sweden 1880-1900*

Martin Dribe (Lund University, Sweden)
Sebastian Klüsener (Max Planck Institute for Demographic Research)
Francesco Scalone (University of Bologna)

*Distinguishing Family and Location Effects upon Wealth:
A Longitudinal Study of the U.S. North 1850 to 1870*

Alice Bee Kasakoff (University of South Carolina, United States)
Andrew B Lawson (Medical University of South Carolina, United
States) **Purbasha Dasgupta** (University of South Carolina, United
States) **Michael DuBois** (University of South Carolina, United
States)

15h00-15h15. Break

15h15-16h45. **Household and Residential Patterns**

Chair: **Don Lafreniere**

*Leaving Home in Nineteenth-Century England and Wales:
Individual and Household Strategies*

Joseph Day (University of Cambridge, United Kingdom)

*Residential Segregation in the Postbellum Southern Cities:
The Case of Washington, DC*

John R. Logan (Brown University, United States)

16h45-17h00. Discussion on publication plans

19h00. Reception dinner. Restaurant Le Cercle, 228 rue St-Joseph est

FRIDAY 18 SEPTEMBER

08h30-10h00. **Modelling Mortality and Morbidity**

Chair: **Martin Dribe**

Spatial modelling of rural infant mortality in nineteenth-century Britain

Paul Atkinson (Lancaster University, United Kingdom) **Ian Gregory** (Lancaster University, United Kingdom) **Brian Francis** (Lancaster University, United Kingdom) **Catherine Porter** (Lancaster University, United Kingdom)

The influence of micro-level soil factors on mortality in southern Sweden, 1850-1914

Finn Hedefalk (Lund University, Sweden)
Luciana Quaranta (Lund University, Sweden) **Tommy Bengtsson** (Lund University, Sweden)

10h00-10h30. Break

10h30-12h00. **Modelling Mortality and Morbidity (continued)**

Chair: **Martin Dribe**

A fresh map of death: Venice 1854

Christina Munno (Université catholique de Louvain, Belgium)
Renzo Derosas (Università Ca' Foscari, Venezia, Italy)

The Spatial distribution of infectious disease in Madrid in early XXth Century.

Diego Ramiro Fariñas (Consejo Superior de Investigaciones Científicas, Madrid, Spain)
Isabel del Bosque González (Consejo Superior de Investigaciones Científicas, Madrid, Spain) **Sara García Ferrero** (Consejo Superior de Investigaciones Científicas, Madrid, Spain) **Yolanda Casado** (Consejo Superior de Investigaciones Científicas, Madrid, Spain)
Lourdes Martín-Forero (Consejo Superior de Investigaciones Científicas, Madrid, Spain)
Rocío Gutiérrez (Consejo Superior de Investigaciones Científicas, Spain)

12h00-13h00. Lunch

13h00-14h30. **Population, Migration and Movement at the Macro-Scale**

Chair: **Danielle Gauvreau**

Spatial Patterns of Changes in Economic Activity, Population and Labor Force in the US, 1970 to 2012: A First Look Using the County Business Patterns, Decennial Census, and the American Community Survey

Andrew Beveridge (Queens College, City University of New York, United States)

Daniel Patrick Miller (Queens College, City University of New York, United States)

Mining Microdata: Economic Opportunity and Spatial Mobility in Britain and the United States, 1850-1881

Evan Roberts (University of Minnesota, United States)

Peter Baskerville (University of Alberta, Canada)

Lisa Dillon (University of Montréal, Canada)

Kris Inwood (University of Guelph, Canada)

Steven Ruggles (University of Minnesota, United States)

Kevin Schürer (University of Leicester, United Kingdom)

John Robert Warren (University of Minnesota, United States)

14h30-14h45. Break

14h45-16.15. **Population, Migration and Movement at the Macro-Scale (continued)**

Chair: **Hélène Vézina**

Which transition comes first? Urban and demographic transitions in comparative perspective.

Philippe Bocquier (Université Catholique de Louvain, Belgium)

Rafael Costa (Vrije Universiteit Brussel, Belgium)

Visualizing movement with spider diagrams: Migration to major urban centers in the late 19th century North Atlantic countries

Sula Sarkar (Minnesota Population Center, University of Minnesota)

16h15-16h45. Concluding Remarks by **Stephen A. Matthews** (Penn State University and chair of the Scientific Panel on Spatial Demography of the IUSSP)

16h45-17h00. Closing by the scientific committee

LIST OF PARTICIPANTS

Paul Atkinson

(Lancaster University, United Kingdom)

Peter Baskerville

(University of Alberta, Canada)

Tommy Bengtsson

(Lund University, Sweden)

Andrew Beveridge

(Queens College, City University of New York, United States)

Philippe Bocquier

(Université Catholique de Louvain, Belgium)

Yolanda Casado

(Consejo Superior de Investigaciones Científicas, Madrid, Spain)

Rafael Costa

(Vrije Universiteit Brussel, Belgium)

Purbasha Dasgupta

(University of South Carolina, United States)

Joseph Day

(University of Cambridge, United Kingdom)

Isabel del Bosque González

(Consejo Superior de Investigaciones Científicas, Madrid, Spain)

Renzo Derosas

(Università Ca' Foscari, Venezia, Italy)

Lisa Dillon

(University of Montréal, Canada)

Martin Dribe

(Lund University, Sweden)

Michael DuBois

(University of South Carolina, United States)

Brian Francis

(Lancaster University, United Kingdom)

Sara García Ferrero

(Consejo Superior de Investigaciones Científicas, Madrid, Spain)

Danielle Gauvreau

(Concordia University, Montreal, Canada)

Jason Gilliland

(University of Western Ontario, Canada)

Ian Gregory

(Lancaster University, United Kingdom)

Rocío Gutiérrez

(Consejo Superior de Investigaciones Científicas, Spain)

Marie-Eve Harton

(Université Laval, Québec, Canada)

Finn Hedefalk

(Lund University, Sweden)

Kris Inwood

(University of Guelph, Canada)

Alice Bee Kasakoff

(University of South Carolina, United States)

Sebastian Klüsener

(Max Planck Institute for Demographic Research, Germany)

Don Lafreniere

(Michigan Technological University, United States)

Andrew B Lawson

(Medical University of South Carolina, United States)

John R. Logan

(Brown University, United States)

Richard Marcoux

(Université Laval, Québec, Canada)

Lourdes Martín-Forero

(Consejo Superior de Investigaciones Científicas, Madrid, Spain)

Stephen A. Matthews

(Penn State University, United States)

Daniel Patrick Miller

(Queens College, City University of New York, United States)

Christina Munno

(Université catholique de Louvain, Belgium)

Sherry Olson

(McGill University, Montreal, Canada)

Catherine Porter

(Lancaster University, United Kingdom)

Luciana Quaranta

(Lund University, Sweden)

Diego Ramiro Fariñas

(Consejo Superior de Investigaciones Científicas, Madrid, Spain)

Laurent Richard

(Université Laval, Québec, Canada)

Evan Roberts

(University of Minnesota, United States)

Steven Ruggles

(University of Minnesota, United States)

Sula Sarkar

(University of Minnesota, United States)

Francesco Scalone

(University of Bologna, Italy)

Kevin Schürer

(University of Leicester, United Kingdom)

Marc St-Hilaire

(Université Laval, Québec, Canada)

Hélène Vézina

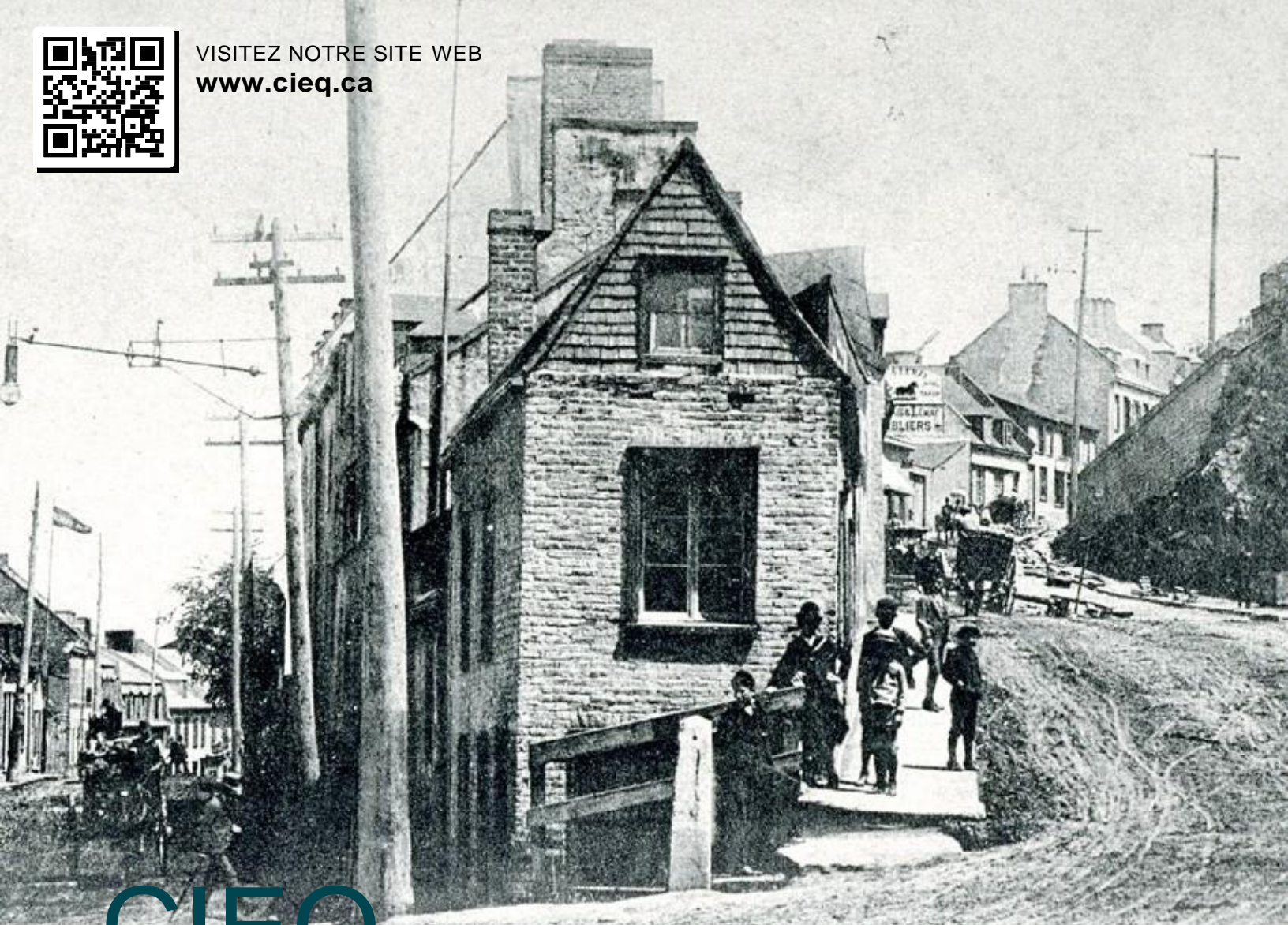
(Université du Québec à Chicoutimi, Canada)

John Robert Warren

(University of Minnesota, United States)



VISITEZ NOTRE SITE WEB
www.cieq.ca



CIEQ

Centre interuniversitaire d'études québécoises
Un lieu de formation, d'échanges
intellectuels et d'interdisciplinarité

Le **CIEQ** s'intéresse au changement socioculturel au Québec, appréhendé dans ses dimensions spatiales et temporelles, depuis la colonisation française jusqu'à nos jours. Les travaux du CIEQ se regroupent autour de trois axes de recherche: **1** les populations et leurs milieux de vie: **2** les institutions et les mouvements sociaux: **3** la culture québécoise: diversité, échanges et transmission.

ciéq Centre
interuniversitaire
d'études québécoises

Présent à l'Université du Québec à Trois-Rivières et à l'Université Laval, le CIEQ est un regroupement stratégique reconnu par le FRQSC.

